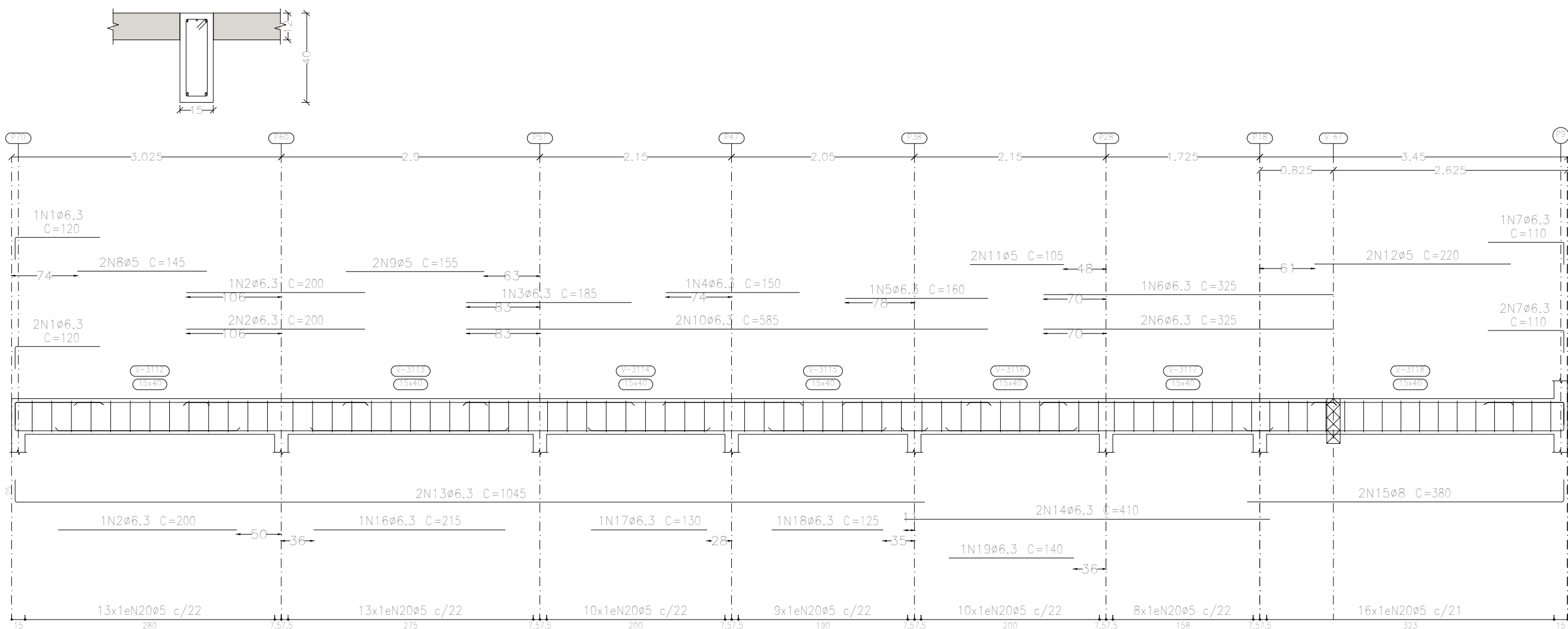
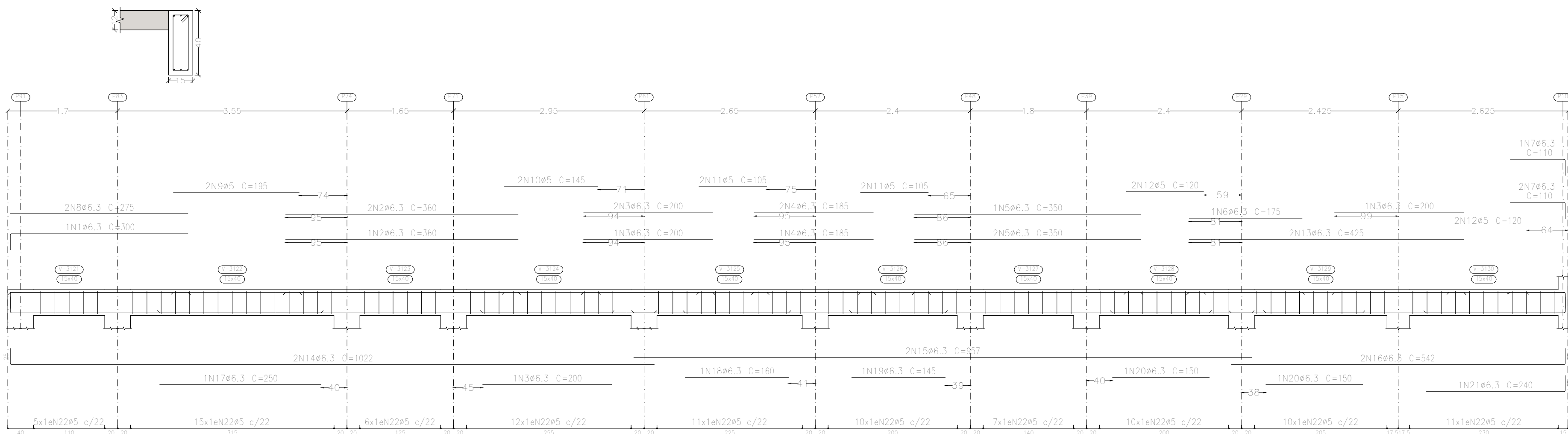


V 54

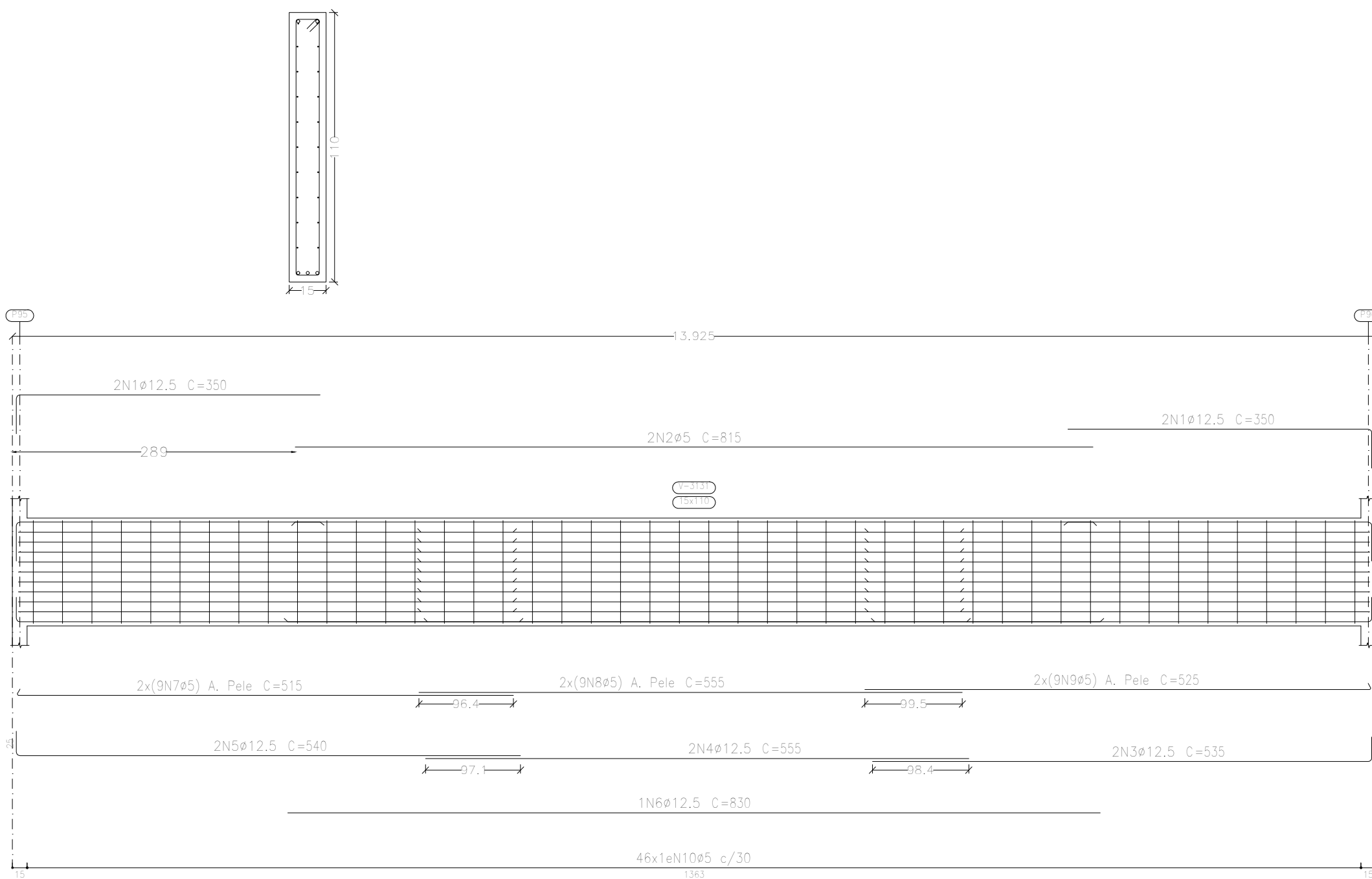


V 56

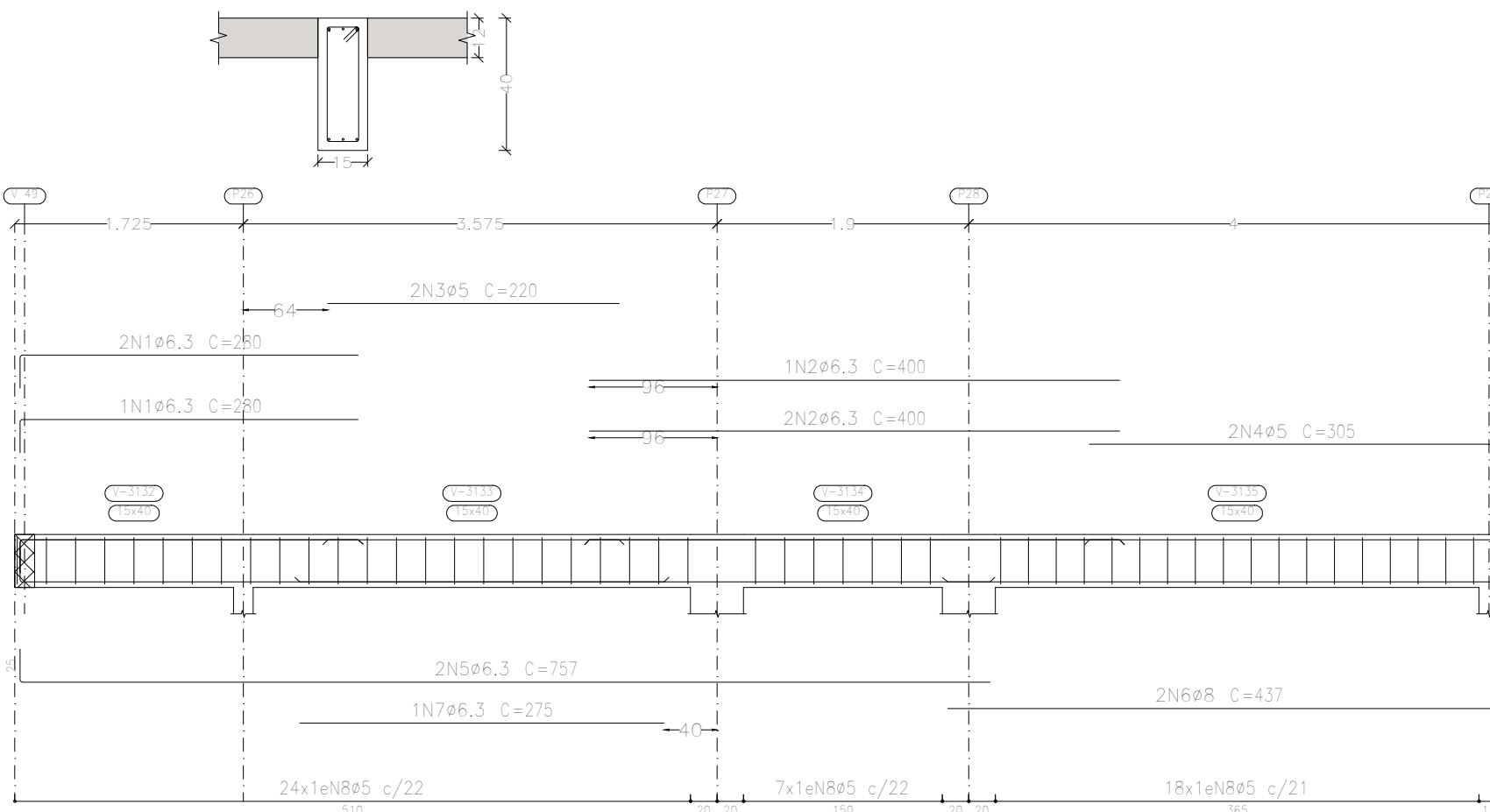


Piso 3
Desenho de vigas
Concreto: C25, em geral
Aço das barras: CA-50 e CA-60
Aço dos estribos: CA-50 e CA-60
Escala vigas 1:50
Escala seções 1:20
Escala aberturas 1:20

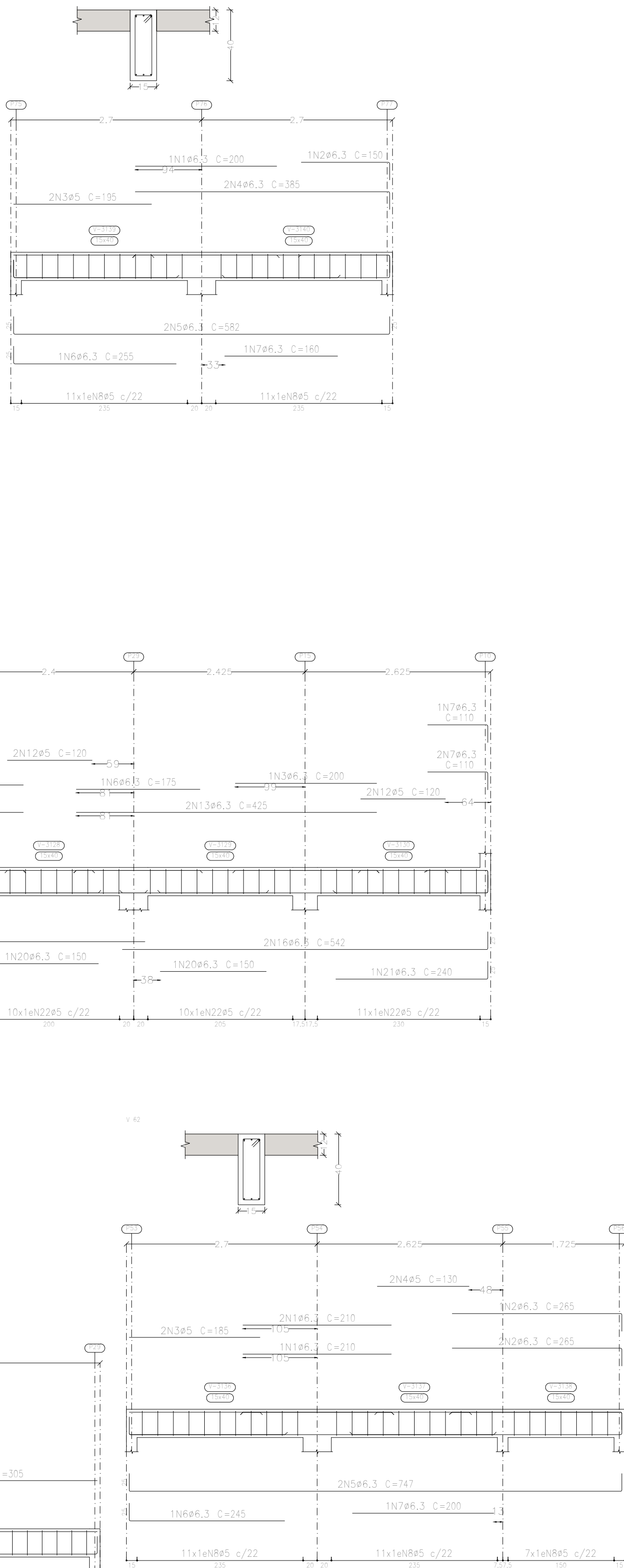
V 58



V 61



V 63



Elemento	Pos.	Diam.	Q.	Esquema (cm)	Comp. (cm)	Total (cm)	CA-50 (kg)	CA-60 (kg)
V 54	1	ø6,3	3		120	360	0.9	
	2	ø6,3	4		200	800	2.0	
	3	ø6,3	1		185	185	0.5	
	4	ø6,3	1		150	150	0.4	
	5	ø6,3	1		160	160	0.4	
	6	ø6,3	3		325	975	2.4	
	7	ø6,3	3		110	330	0.8	
	8	ø5	2		145	290		0.5
	9	ø5	2		155	310		0.5
	10	ø6,3	2		585	1170	2.9	
	11	ø5	2		105	210		0.3
	12	ø5	2		220	440		0.7
	13	ø6,3	2		1045	2090	5.1	
	14	ø6,3	2		410	820	2.0	
	15	ø8	2		380	760	3.0	
	16	ø6,3	1		215	215	0.5	
	17	ø6,3	1		130	130	0.3	
	18	ø6,3	1		125	125	0.3	
	19	ø6,3	1		140	140	0.3	
	20	ø5	79		98	7742		12.2
Total+10%:							24.0	15.6
V 56	1	ø6,3	1		300	300	0.7	
	2	ø6,3	3		360	1080	2.6	
	3	ø6,3	5		200	1000	2.4	
	4	ø6,3	3		185	555	1.4	
	5	ø6,3	3		350	1050	2.6	
	6	ø6,3	1		175	175	0.4	
	7	ø6,3	3		110	330	0.8	
	8	ø6,3	2		275	550	1.3	
	9	ø5	2		195	390		0.6
	10	ø5	2		145	290		0.5
	11	ø5	4		105	420		0.7
	12	ø5	4		120	480		0.8
	13	ø6,3	2		425	850	2.1	
	14	ø6,3	2		1022	2044	5.0	
	15	ø6,3	2		957	1914	4.7	
	16	ø6,3	2		542	1084	2.7	
	17	ø6,3	1		250	250	0.6	
	18	ø6,3	1		160	160	0.4	
	19	ø6,3	1		145	145	0.4	
	20	ø6,3	2		150	300	0.7	
	21	ø6,3	1		240	240	0.6	
	22	ø5	97		98	9506		14.9
Total+10%:							32.3	19.3
V 58	1	ø12,5	4		350	1400	13.5	
	2	ø5	2		815	1630		2.6
	3	ø12,5	2		535	1070	10.3	
	4	ø12,5	2		555	1110	10.7	
	5	ø12,5	2		540	1080	10.4	
	6	ø12,5	1		830	830	8.0	
	7	ø5	18		515	9270		14.6
	8	ø5	18		555	9990		15.7
	9	ø5	18		518	9450		14.8
	10	ø5	46		238	10948		17.2
Total+10%:							58.2	71.4
V 61	1	ø6,3	3		280	840	2.1	
	2	ø6,3	3		400	1200	2.9	
	3	ø5	2		220	440		0.7
	4	ø5	2		305	610		1.0
	5	ø6,3	2		757	1514	3.7	
	6	ø8	2		437	874	3.5	
	7	ø6,3	1		275	275	0.7	
	8	ø5	49		98	4802		7.5
Total+10%:							14.2	18.1
V 62	1	ø6,3	3		210	630	1.5	
	2	ø6,3	3		265	795	1.9	
	3	ø5	2		185	370		0.6
	4	ø5	2		130	260		0.4
	5	ø6,3	2		747	1494	3.7	
	6	ø6,3	1		245	245	0.6	
	7	ø6,3	1		200	200	0.5	
	8	ø5	29		98	2842		4.5
Total+10%:							9.0	6.1
V 63	1	ø6,3	1		200	200	0.5	
	2	ø6,3	1		150	150	0.4	
	3	ø5	2		195	390		0.6
	4	ø6,3	2		385	770	1.9	
	5	ø6,3	2		582	1164	2.9	
	6	ø6,3	1		255	255	0.6	
	7	ø6,3	1		160	160	0.4	
	8	ø5	22		98	2156		3.4
Total+10%:							7.4	4.4
							ø5:	0.0
							ø6,3:	79.7
							ø8:	7.2
							ø12,5:	58.2
							Total:	145.1
								126.9

Complexo Municipal de Saúde	Data:	25/10/2023
Local:	Número de desenho:	
Avenida Júlio Campos, Quadra 03		
Complexo Municipal de Saúde	Escala:	Indicada
Eduardo Rampanelli Tosetto Engenheiro Civil Número do CREA: 1220503037	Data:	25/10/2023